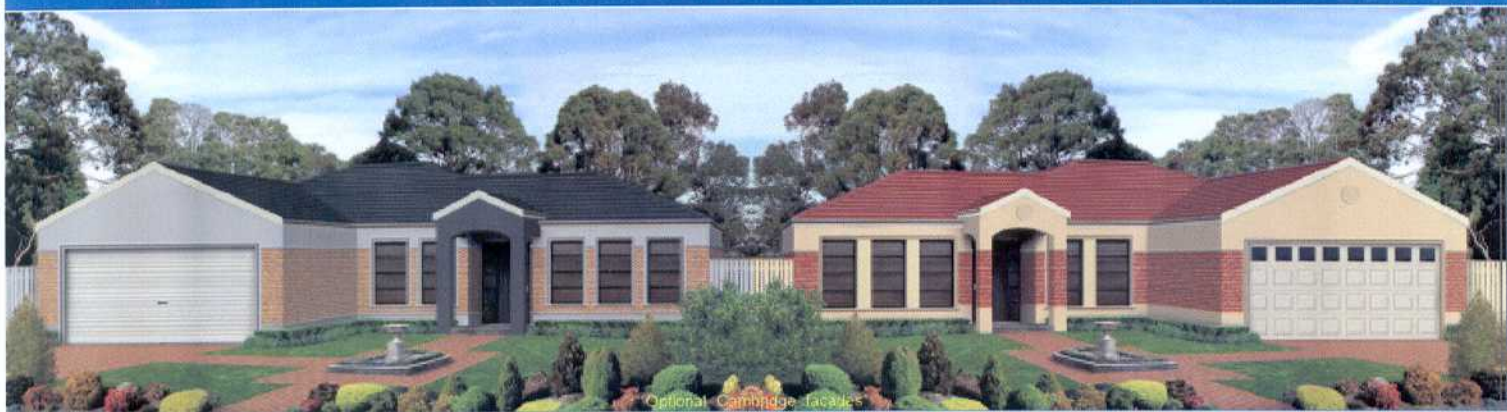


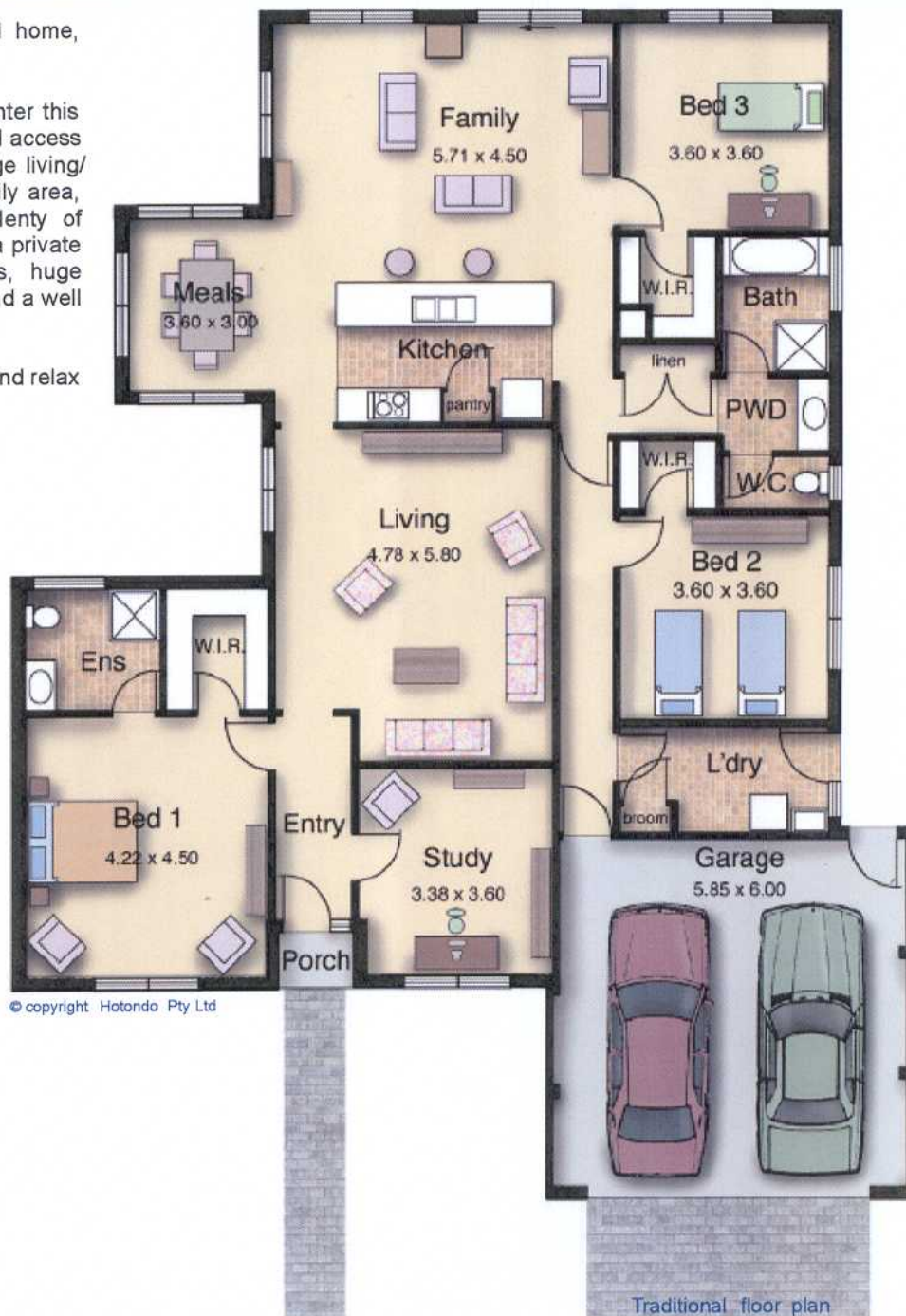
COOMERA 196



The Coomera 196 is a practical, well arranged home, offering convenience and comfort.

Designed with convenience in mind, as you enter this home you'll immediately notice the direct internal access from the garage, through to the laundry, a large living/home theatre room and a spacious kitchen/family area, adjoined by a separate meals area. With plenty of daylight, this home is a real delight, featuring a private master bedroom tucked away from the kids, huge secondary bedrooms, a separate study/office and a well appointed kitchen.

The Coomera 196 is the ideal place to sit back and relax with family and friends.



SPECIFICATIONS

Ground floor	195.98m ²
Garage	39.03m ²
Total Enclosed Space	235.01m²
Porch	1.31m ²
Grand Total	236.32m²
Width	15.50m
Length	20.71m

* Dimensions and sketches are approximate only. Check with your builder for local standard inclusions. Hotondo reserve the right to change plans, specifications, materials and suppliers without notice.



HOTONDO
Affordable Award Winning Homes

THE BEST OF BOTH WORLDS

Personal service from your local builder backed by Hotondo, the leading National network